

CERTIFICATE OF ANALYSIS 170653
VERSION 1

23.02.2022
Page 1

Art.-No. 007014
Description RAD. ELEUTHEROCOCCI PULV. SUBT.
ELEUTHEROCOCCUS ROOT POWDER
Batch-No: **4469205**

Test Results:

Identity: conforms
Smell: conforms
Taste: conforms
TLC: conforms
Macroscopic: conforms
Microscopic: conforms
Purity test: conforms
Heavy metals: conforms statistical safeguarding

Pesticides/Herbicides: Raw Material Batch meets statistical safeguarding

Microbiology

Aflatoxine: Raw Material Batch complies EP 4,00

Pyrrolizidine alkaloids conforms to statistical safeguarding

| Specification: | RESULT | MAX |
|-----------------------|---------------|------------|
| Loss on drying: | 5.4% | 10,0% |
| Ashes: | 6.9% | 8,0% |
| Foreign matters: | <3,0% | 3,0% |

| Actives: | RESULT | MIN. |
|---------------------|---------------|-------------|
| Eleutheroside B + E | 0,12% | 0,08% |

The test results shown above refer to the tested sample.

The lot has been tested according to the specification and according to the latest scientific facts. The lot has the required quality:

Best Before Date: May 2025



Labelling of allergens

We herewith certify that according to regulation (EU) No 1169/2011 of the European parliament and the council of 25 October 2011 the products:

Ginseng Siberian Powder

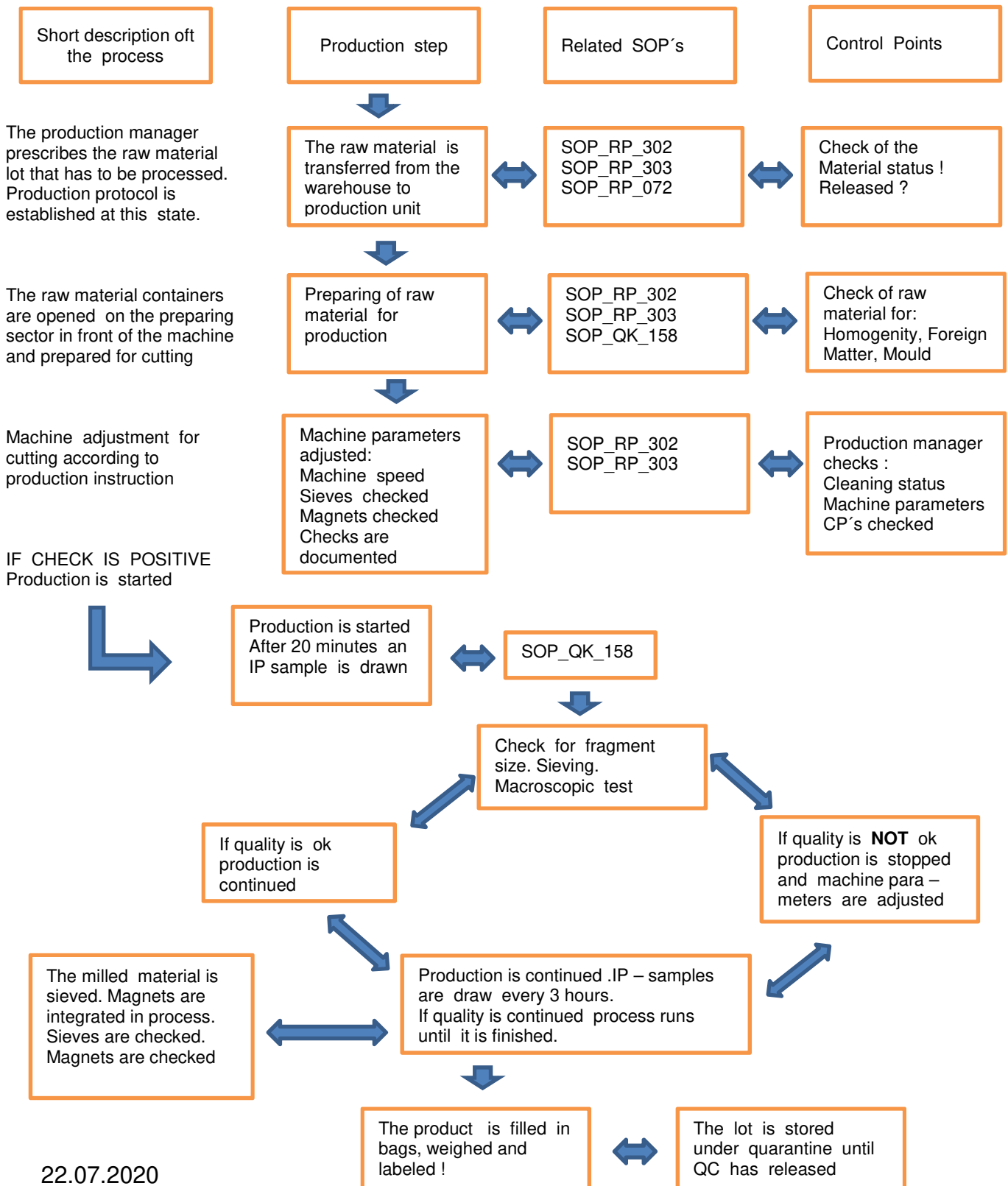
do not contain the following ingredients

- Cereals containing gluten (i.e. wheat, rye, barley, oats, spelt, kamut or their hybridised strains) and products thereof.
- Crustaceans and products thereof.
- Eggs and products thereof.
- Fish and products thereof.
- Peanuts and products thereof.
- Soybeans and products thereof.
- Milk and products thereof (including lactose).
- Nuts, i.e. almonds (*Amygdalus communis L.*), hazelnuts (*Corylus avellana*), walnuts (*Juglans regia*), cashews (*Anacardium occidentale*), pecan nuts (*Carya illinoensis (Wangenh.) K. Koch*), Brazil nuts (*Bertholletia excelsa*), pistachio nuts (*Pistacia vera*), macadamia nuts and Queensland nuts (*Macadamia ternifolia*), and products thereof.
- Celery and products thereof.
- Mustard and products thereof.
- Sesame seeds and products thereof.
- Sulphur dioxide and sulphites at concentrations of more than 10 mg/kg expressed as SO₂.
- Lupin and products thereof.
- Molluscs and products thereof.

11.08.2021

Flow Chart Production : Gingseng Siberian Powder

Flow chart for the production





GMO STATEMENT

We hereby certify and confirm, that the below item we are supplying does not contain GMO material, nor has been in contact with any GMO treated material during its storage and processing.

VEGAN/ VEGETARIAN STATEMENT

We hereby certify that the below item we are supplying is suitable for vegan and vegetarian.

Ginseng Siberian Powder

11.08.2021

actuality 06.2021
 revised on: 09.07.2009
 data sheet No.: 100395
 version: 3

printing date 29.06.2021
 Seite 1

1. description of the substance resp. the mixture and the company

1.1 information about the product

product name Ginseng Siberian Powder
form Radix Eleutherococci
mother plant Pulver/Concis/Feinschnitt
 Eleutherococcus senticosus Maxim.
 Araliaceae

1.2 information about the producer / supplier

producer Madar Corporation Limited
 19 - 20 Sandleheath Industrial Estate, Fordingbridge
 SP6 1PA

1.3 further information by:

telephone: 01425 655 555
 e-mail: technical@madarcorporation.o.uk

2. Possible Danger

2.1 Possible Risks, Health Hazards

Keine bekannt

2.2 additional hazard statement for humans and environment

Keine

3. composition / information about contents

3.1 Ingredients

Eleutheroside

3.2 hazardous ingredients

Keine

3.3 substances with specified EU limits:

none !

4. first aid measures

4.1 description of the first aid measures

skin contact: wash with water ! inhaling: cough up as far as possible, drink water ! swallowing larger quantities: initiate vomiting !

4.2 hints for the doctor

Keine besonderen Hinweise

5. fire fighting measures

use of conventional extinguishers i.e. ABC fire extinguisher, CO 2 extinguisher, foam

6. necessary measures in case of uncontrolled release

6.1 personal related precautionary measures

respiratory protection

6.2 environment related protection measures:

none

6.3 cleaning / pick up

no specific protection measures necessary. Mechanical removal from the floor sufficient

7. handling and storage

7.1 instructions for handling and storage

store cool and dry protected against light
dry storage in paper bags

7.2 fire protection measures

avoid open light and fire, do not smoke

8. exposition limit and personal protection equipment

8.1 limited concentration

19-20 Sandleheath Industrial Estate, Fordingbridge, Hampshire, SP6 1PA, UK
 none known Tel: 01425 655555 Email: technical@madarcorporation.co.uk

8.2 personal protection measures

safety data sheet

according to EU Reg. No.: 1907/2006

actuality 06.2021
revised on: 09.07.2009
data sheet No.: 100395
version: 3

printing date 29.06.2021
Seite 2

during processing and production:
wear dust mask

9. physical and chemical properties

9.1 nature

plant material dried

9.2 organoleptic properties

fast ohne Geruch und Geschmack

9.3 relevant safety data

Keine besonderen Spezifikationen

10. stability and reactivity

do not expose to direct sunlight

11. toxicity

nicht toxisch

12. ecology

Indifferent

13. disposal

with organic waste

14. transport

protect against humidity in tightly closed containers

15. legislation

no specific regulation

16. further information

keine !

valid EU regulations

none

application limit

none

end of the safety data sheet

| | |
|----------------------|---|
| Article description: | Ginseng Siberian Powder - Radix Eleutherococci |
| Synonym: | Taigawurzel, Eleutherococcus |
| Testing Instruction: | Ph.Eur.10.0 /1419 |
| Article number: | 7010 bis 7019 |
| Plant of origin: | Eleutherococcus senticosus (RUPR. et MAXIM) MAXIM., Araliaceae |
| Country of origin: | Russia, China, Poland |
| Definition: | Dried, whole or cut underground organs of Eleutherococcus senticosus Maxim. |
| Product classific. | Medicine |

| | |
|-------------------|--|
| Parameter: | Test instruction: Given values: |
|-------------------|--|

Identity:

| | |
|----------------|---|
| Odour / Smell: | Almost without odour and taste. |
| Macroscopy: | The rhizome is knotty, of irregular cylindrical shape, 1.5 cm to 4 cm in diameter; the surface is brown, rugged and longitudinally wrinkled. The heartwood is light brown and the sapwood is pale yellow. |
| Microscopy: | Numerous groups of thick-walled, lignified fibres. Fragments of reticulate and bordered pitted vessels with a wide lumen. Groups of secretory canals. Parenchymatous cells containing cluster crystals of calcium oxalate 10-50 µm in diameter. |

| | | |
|-------------------------|----------------|--------------------------------------|
| <u>TLC-test:</u> | Ph. Eur.2.2.27 | complies with reference chromatogram |
|-------------------------|----------------|--------------------------------------|

Purity:

| | | |
|-----------------|----------------|------------|
| Loss on drying: | Ph. Eur.2.2.32 | Max. 10,0% |
| Ash: | Ph. Eur.2.4.16 | Max. 8,0% |
| Foreign matter: | Ph. Eur.2.8.2 | Max. 3% |

Content:

| | | |
|---------------------|----------------|-------------|
| Eleutheroside B + E | Ph. Eur.2.2.29 | Min. 0,08 % |
|---------------------|----------------|-------------|

| | |
|--------------------|-----------|
| Shelf-life: | 36 months |
|--------------------|-----------|